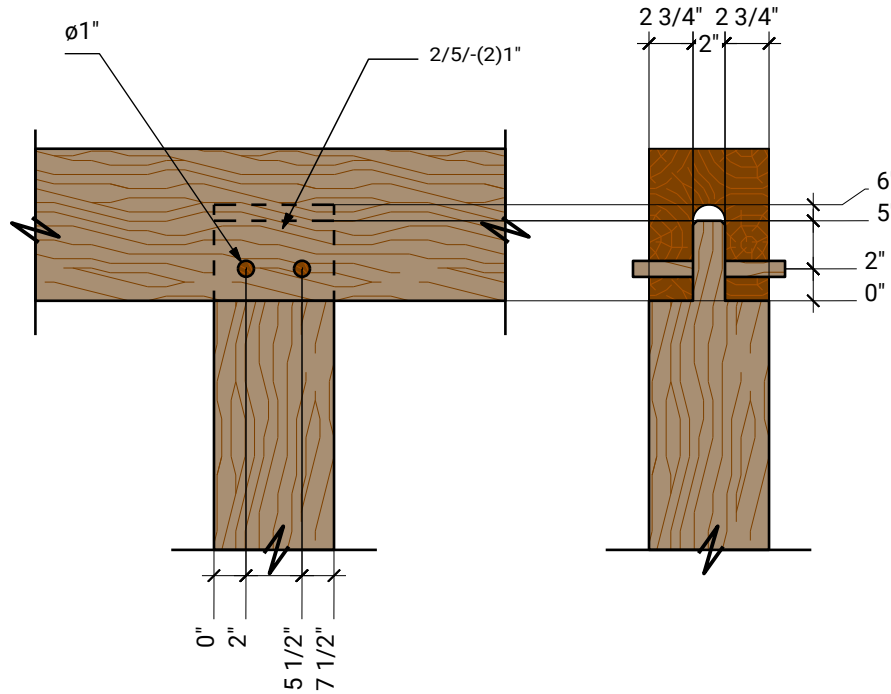


This is a detail sheet illustrating an option on how to layout and cut this particular joint. This entry includes the following:

This is a primary and fundamental joint.

The intent is to use our frame drawings to gather the right lengths and then when it comes time to laying out joinery you refer to these. Mortise and tenon joints are signified by tenon thickness, tenon length, housing depth, and qty of diameter pegs. I.e.: 2/4/1-(2)1" means 2" thick tenon x 4" long w/ a 1" deep housing and (2) 1" dia. Pegs.



POST TOP TENONS SHOULD HAVE A LONG TENON AS ROOF LOAD UPLIFT IS USUALLY A FACTOR. 3" OF RELISH (BEYOND THE PEGS TO THE END OF THE TENON) AND 2" OF DISTANCE FROM THE PEGS TO THE SHOULDER. WITH SURFACED MATERIAL THERE IS NO NEED TO HOUSE THE JOINT. WE DO NOT RECOMMEND CREATING 4 SHOULDERS, AT THIS JOINT, OR ANY FOR THAT MATTER, UNLESS A CNC MACHINE IS CUTTING THE JOINT.

OVER PLUNGE THE MORTISE TO ALLOW FOR CLEARANCE OF THE RADIAL CUT FROM A CHAIN MORTISER (CROSS CUT TOOLING SHOWN) AND/OR TO ACCOUNT FOR SHRINKAGE OF THE WOOD.

TYPICAL POST JOINT

Scale: 1" = 1' - 0"

JOINT GROUP: **S4S**

FRAME AREA: **POST**

DETAIL: **FUNDAMENTAL POST JOINT**

Date: 01-08-2024

Designer: Meyer Fountain

COPYRIGHT 2023. JOINT AND PEG. Reproduction and/or use without written permission is prohibited. These are Design Only plans unless sealed by a State Licensed Professional Engineer. JOINT AND PEG assumes no responsibility and does not warrant these plans.



JOINT AND PEG

1643-B Savannah Hwy

Unit 162

Charleston, SC 29407

843-480-0885

info@jointandpeg.com

JOINT LIBRARY

REFER TO LEFT SIDE OF SHEET

FOR CLASSIFICATIONS

3D file name: 14x24 Square Rule Shed Roof

File name: Connection Library.2d